



You Can't Manage What You Don't Measure

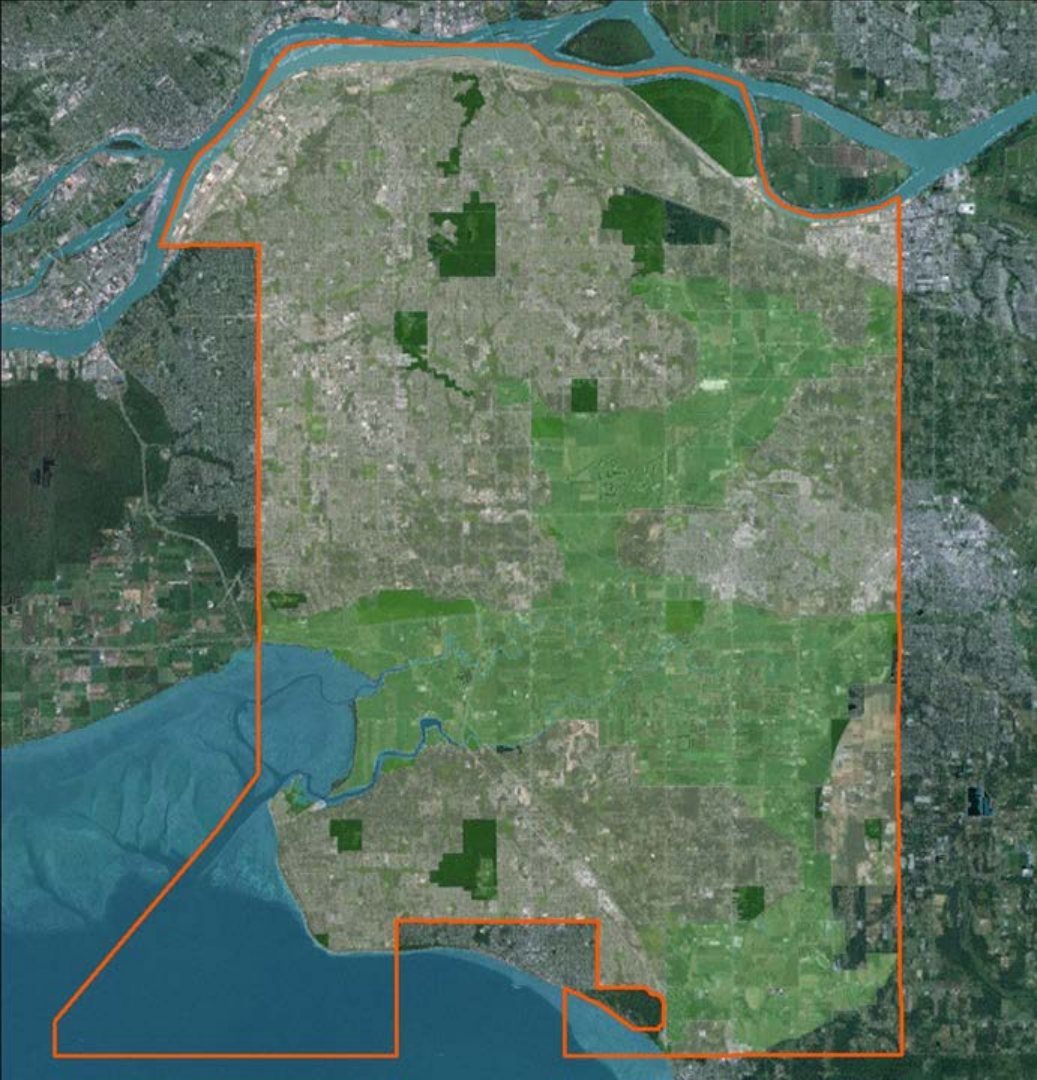
Establishing Monitoring Frameworks for Adaptation

Surrey

Erin Desautels | MBA MA BSc
Sustainability Planner

June 4, 2020





Hello
my name is

Surrey

~ 580,000 people

+ 1,000 people/month

+ 3,700 units/year

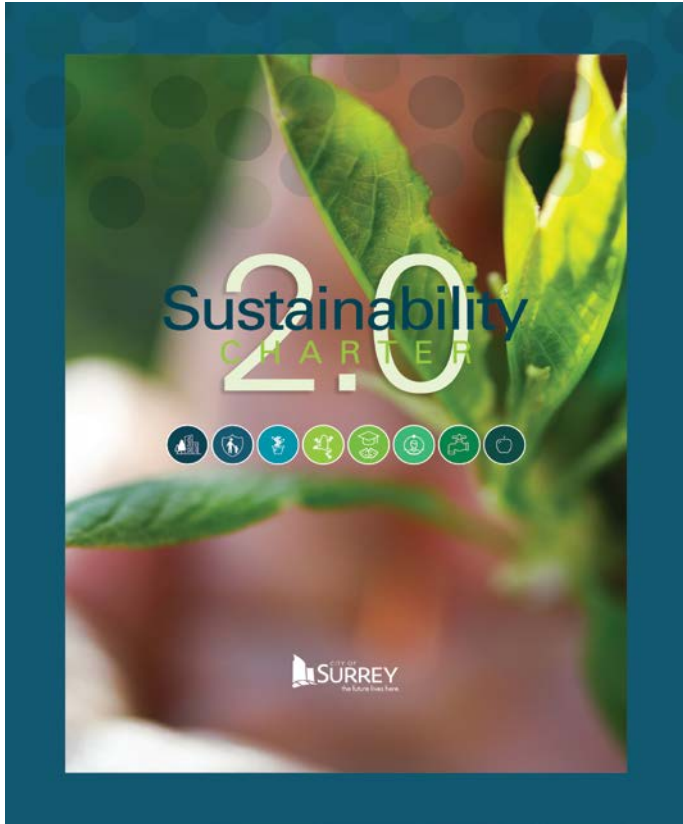
$\frac{1}{3}$ Agricultural Land Reserve

8,500 ha floodplains

Diverse and young population

Surrey Sustainability Charter

- City's overarching policy document



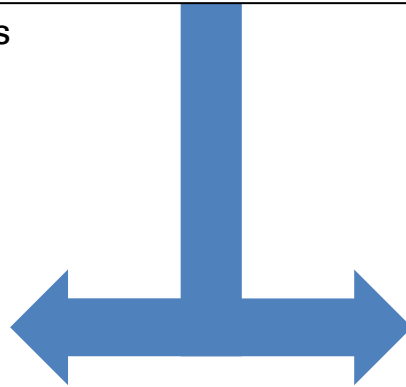
Mitigation

Mitigating the release of GHG emissions to **minimize future climate change**



Adaptation

Adapting or **preparing for the unavoidable impacts** of climate change



A scenic sunset over a body of water, with a silhouette of a bird in the foreground. The sky is a mix of orange, red, and purple, reflecting on the water. The foreground shows dark silhouettes of grass and a bird, possibly a heron, looking out over the water.

City of Surrey
Climate Adaptation Strategy

Climate Adaptation Strategy Process

- Developed through ICLEI's BARC framework
- Assessed vulnerabilities and risk (high & medium risk focus)
- Identified 91 actions to increase resilience across 6 sectors:
Flood Management and Drainage / Infrastructure / Ecosystems and Natural Areas / Urban Trees and Landscaping / Human Health and Safety / Agriculture and Food Security (+ Cross Cutting)
- 36 indicators initially proposed
 - Representative; resource-prohibitive to monitor every goal and action



Example of Proposed Sector Indicators

Agriculture and Food Security

Goal	Proposed Indicator	Related Plan or Source	Department
Provide appropriate infrastructure for agricultural viability	Number of flooding events that exceed standards set by Agri Food Regional Development Subsidiary Agreement (ARDSA)	Lowlands Flood Control Project	Engineering
Encourage greater diversity in local product and growing methods	Total number of food products grown in Surrey	Agriculture Strategy; Agricultural Plan	Sustainability; Planning
	Gross revenue from processing and/or number of processing facilities	Agriculture Strategy	Sustainability; Planning
Increase food self-sufficiency in the City and region	Gross annual farm receipts	Sustainability Dashboard	Planning
	Total land in food production	Sustainability Dashboard	Sustainability
	Number of Community Garden Plots	Sustainability Dashboard	Sustainability

Setting Parameters for Monitoring & Evaluation

- Lead by Sustainability Office and Adaptation Advisory Committee
- Considered:



- Methodology to determine indicator values (consistency year-to-year)
- Data owner (who controls access to the data? internal, external)



- Data collection avenue (currently tracked by City staff vs. new responsibility)
- Establishing a baseline and desired trend (years of data currently available)



- Thresholds for determining progress (on target, off target, no target, stable)



- Data update schedule (annual, Census-driven)
- Strive for mix of leading and lagging indicators

Refining the Indicators

36

Proposed in Climate
Adaptation Strategy
(2013)



14

Initial adaptation
indicators established
(2014)

Data Sources & Supportive Plans

SUSTAINABILITY DASHBOARD

CHOOSE A THEME

- BUILT ENVIRONMENT & NEIGHBOURHOODS >
- INFRASTRUCTURE >
- ECONOMIC PROSPERITY AND LIVELIHOODS >
- ECOSYSTEMS >
- INCLUSION >
- EDUCATION AND CULTURE >
- PUBLIC SAFETY >
- HEALTH AND WELLNESS**

THEME

HEALTH AND WELLNESS

Goal: A community in which all residents are healthy, active and connected.

Learn more about the [Surrey Sustainability Charter](#).

Map this theme

CHOOSE AN INDICATOR *

COMMUNITY GARDENS

INDICATOR [Twitter](#)

COMMUNITY GARDENS

Community gardens enhance community food security by allowing urban residents to grow their own food. Community gardens offer health benefits by providing people with access to fresh produce, a significant source of food for low-income community members. Community gardens also provide a significant source of food for low-income community members. Community gardens also provide a significant source of food for low-income community members. This indicator is a measure of environmental stewardship and good neighbourliness. The City aims to see the number of plots trend up over time.

OUR PERFORMANCE & TARGET

Garden Plots

Year	Garden Plots
2010	301
2011	301
2012	291
2013	368
2014	413

2016 SHADE TREE MANAGEMENT PLAN

CITY OF SURREY

COASTAL FLOOD ADAPTATION STRATEGY

NOVEMBER 2015

CFAS | CITY OF SURREY

BIODIVERSITY CONSERVATION STRATEGY

PRODUCED BY DIANNE HEAL CONSULTING - JANUARY 2014

CITY OF SURREY

AGRICULTURE PROTECTION AND ENHANCEMENT STRATEGY

CITY OF SURREY



Challenges: Community Gardens



- **Description:** *Number of garden plots in City-operated community gardens*
- **CAS Goal:** *Increase food self-sufficiency in the City and region*
- **Initial Trend Sought:** *Increase active gardeners to bolster local food supply, enhance food security, and strengthen community resilience.*

BUT...

- **Current Reality:** *Other community gardens aren't included in this measure and size of plots isn't factored into food production potential. Dependent on community groups working with City on developing and stewarding gardens.*
- **Potential Implications:** *Indicator doesn't adequately reflect the actual volume of community gardens and garden plots; progress limited by City staff and budget capacity.*

Next for Surrey's Adaptation Indicators

- “Set” of 14 indicators not publicly promoted
 - 5 currently found on Sustainability Dashboard (out of 59 in total)
 - Continued challenges with consensus on validity, data availability, and staff capacity
- Ongoing integration with Surrey's Enterprise Risk Management (ERM) platform
- 2020 Climate Action Strategy update
 - Climate emergency declared in 2019
 - Council and community are supportive of new GHG reduction targets and low carbon resilience focus
 - Opportunity to revisit adaptation indicators
- New-ish City of Surrey Corporate Framework
 - Increasing staff understanding of working with indicators
 - Broader institutional knowledge and support from senior management



eadesautels@surrey.ca

THANK YOU

